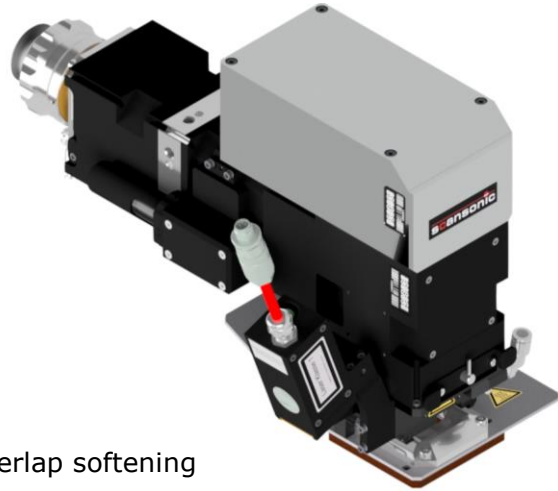


# RLH-A Basic

## SIMPLE TEACHING AND HIGHEST PRECISION

The RLH-A Basic is a cost effective solution as a versatile high-precision system for surface hardening and softening. Its patented temperature control opens up a wide range of application possibilities: from filigree work to large and complex jobs.

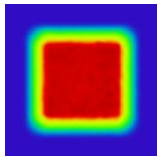


## FEATURES

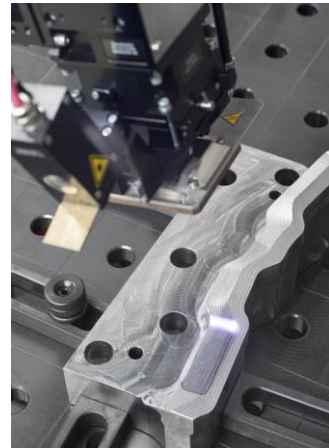
- Temperature control to prevent thermal overlap softening
- Reproducible hardness values through temperature control
- Modular concept: configuration-kit provides German high-tech for flexible and effective applications

## APPLICATIONS

- Hardening of stamping die and tooling parts
- Hardening of powertrain parts
- Softening of body-in-white parts



Fixed spot 19 mm x 19 mm



Laser hardening of complex stamping die and tooling parts

## TECHNICAL DATA

Wavelength	910 – 1085 nm
Laser power	8 kW (up to 12 kW on demand)
Laser source	Suitable for diode, disc and fiber laser
Measuring range of pyrometer	800 to 1600°C

### Contact:

Scansonic MI GmbH  
 Schwarze-Pumpe-Weg 16  
 12681 Berlin, Germany

Tel.: +49 30 912 074 10  
 Fax: +49 30 912 074 29  
 E-mail: [info@scansonic.de](mailto:info@scansonic.de)  
 Web: [www.scansonic.de](http://www.scansonic.de)